

Instructions

You can use this iPad to see a doctor, find trustworthy health information, or even have a job interview!

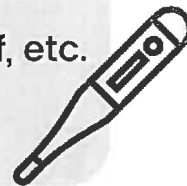
What you'll need:

- Your email address
- A private space
- Internet connection



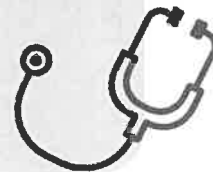
Optional:

- Your insurance information
- Thermometer, blood pressure cuff, etc.
- Headphones



Choose your app:

- By need, time or location (see chart)
- Create an account if needed
- Sign in
- Get the care you need!



Returning the iPad:

- Log out of any accounts used
- Close all the apps used
- Gather up the accessories
- Recycle this sheet



Organization	App/Link Name (if different)	Hours	Visit Type	Appt. Req'd	Patient Age	Service Area	Translator Available?*
Atlantic Health	Atlantic Anywhere	24/7	Urgent		2+	NJ	Y
AtlantiCare		9a-6p	Any	X	Infant+		
Cooper Hospital			Any	X			
CVS		24/7	Urgent				Y
Doxy.me		Variable	Any	X			
Hackensack Meridian	ConnectNOW	24/7	Urgent				
Inspira Health	MyInspira*	*Temporarily closed, 12.29	Any	X	Teen+	Cumberland Gloucester Salem	Y
	MDLIVE	24/7/365	Urgent		Infant+	United States	
Jefferson Hospital	MyChart	24/7/365	Urgent		Infant+		Y
Penn Medicine	myPennMedicine	24/7/365	Routine	X	14+	NJ, DE, MD, PA	
			Urgent				
			Routine	X			
RWJ Barnabas Health	RWJ Barnabas Telemed	24/7/365	Urgent		Varies	Global	Spanish French
		8a-6p (varies)	Routine	X			
St. Joseph's Health	Amwell	24/7	Urgent			Passaic	
			Routine	X			
Summit Health	MySummitHealth	24/7	Urgent			NJ	
Valley Health	Valley ConnectNOW	24/7	Urgent				
		8a-8:45 (M-F)	Urgent	X	6m+	Southern NJ	
Virtua	MyChart	9a-4:45p (S-S)	Routine	X			

*Does not include ASL